

quality . service
innovation . integrity

Models BK293, BL293



"The color green
is a registered
trademark of
Zoeller Pump Co."

Features

This product is not available in North America.

This series of submersible pumps is designed for use in residential or light commercial dewatering and wastewater applications and can be used to transfer groundwater and effluent or raw sewage. The innovative vortex impeller design reduces the risk of clogging and allows each pump to pass 50 mm (2") spherical solids. These durable cast iron pumps include a powder coated epoxy finish to prevent corrosion and are designed to provide great heat dissipation from the motor, ensuring a long service life. As with every Zoeller® pump, each one is 100% pressure-tested, submerged and run to ensure quality and reliability for years of trouble-free performance!

- Automatic pumps include a float-operated, 2-pole mechanical switch, a stainless steel float guard and switch arm, and a solid, buoyant polystyrene float.
- For nonautomatic pumps, variable level control systems and containers of various sizes are available for longer cycles.
- All models are hermetically sealed to be watertight, dust-tight, and completely submersible.

Specifications

Motor Characteristics

Motor	2.2 KW
Voltage	220 V
Phase	1 Ph
Hertz	60 Hz
RPM	3450 RPM
Type	Permanent split capacitor
Insulation	Class B
Amps	10.2 Amps

Pump Characteristics

Operation	Automatic and nonautomatic
Auto On/ Off Points	37.5 cm / 12.7 cm (14-3/4" / 5")
Discharge Size	2" or 3"
Solids Handling	50 mm (2") spherical solids
Cord Length	6 or 3 m (20' or 10') standard
Cord Type	H07RN
Max Head	15.2 m (50')
Max Flow Rate	446.7 LPM (118 GPM)
Max Operating Temp	54°C (130°F)
Cooling	Oil filled
Motor Protection	IPX8

Materials Characteristics

Cap	Cast iron
Motor Housing	Cast iron
Pump Housing	Cast iron
Base	Cast iron
Upper Bearing	Ball bearing
Lower Bearing	Ball bearing
Mechanical Seals	Carbon and ceramic
Impeller Type	Non-clogging vortex
Impeller	Bronze
Hardware	Stainless steel
Motor Shaft	1117 carbon steel
Gasket	Neoprene

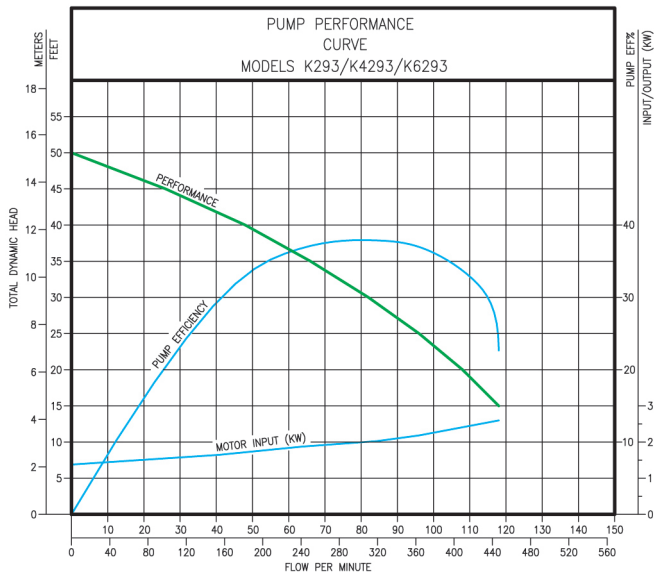
60 Hz



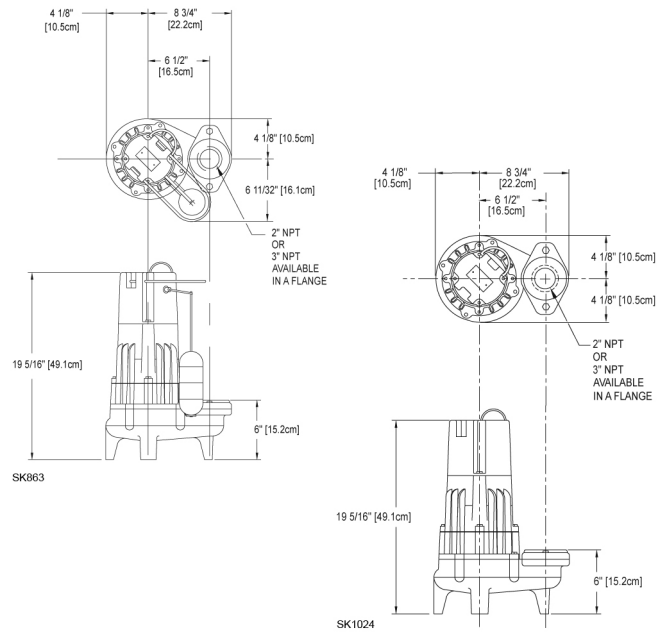
PUMP COMPANY

Zoeller Family of Water Solutions™

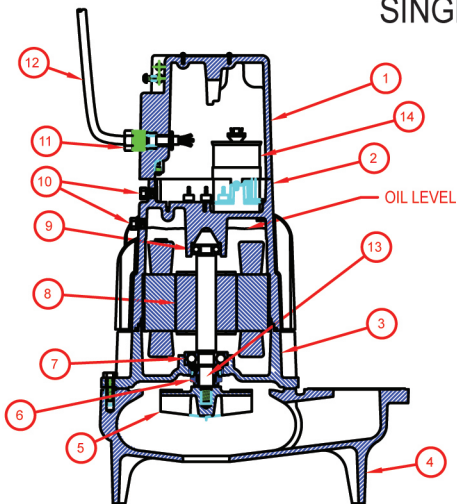
Models BK293, BL293



151317



SINGLE PHASE



ITEM	DESCRIPTION	MATERIAL	QTY.
1	COVER HOUSING	ASTM A-48 CAST IRON/CLASS 30	1
2	MOTOR HOUSING	ASTM A-48 CAST IRON/CLASS 30	1
3	ADAPTER HOUSING	ASTM A-48 CAST IRON/CLASS 30	1
4	PUMP HOUSING AND BASE	ASTM A-48 CAST IRON/CLASS 30	1
5	VORTEX IMPELLER	CDA #C89833 BRONZE	1
6	SHAFT SEAL	CARBON/CERAMIC	1
7	LOWER BEARING	HIGH-CARBON STEEL #52100	1
8	MOTOR - ROTOR AND STATOR	SQUIRREL CAGE INDUCTION	1
9	UPPER BEARING	HIGH-CARBON STEEL #52100	1
10	OIL FILL AND TEST PLUGS	1/8-27 N.P.T.	2
11	CORD SEAL	NEOPRENE	1
12	POWER CORD	SOW/SOOW (CE MODEL HO7RN-F)	1
13	SHAFT	AISI 1117	1
14	RUN CAPACITOR	-	1

SK2966

Model

Model Number	Seal	Mode	Volts	Phase	Amps	KW (p1)	Hz	Lbs	Kg
BK293	Single	Auto	220	1	10.2	2.2	60	91	41
BL293	Single	Non	220	1	10.2	2.2	60	89	40

Note: This product is not available in North America.

Your Peace of Mind is Our Top Priority®

3649 Cane Run Rd | Louisville, KY 40211 USA

+1 502-778-2731 | 1-800-928-7867 | Fax: +1 502-774-3624

www.zoeller.com

Product information presented here reflects conditions at time of publication. Consult factory regarding discrepancies or inconsistencies. Copyright Zoeller Company. All rights reserved.

quality . service
innovation . integrity

Model K293



Features

This product is not available in North America.

This submersible pump is designed for use in residential or light commercial dewatering and wastewater applications and can be used to transfer groundwater and effluent or raw sewage. The innovative vortex impeller design reduces the risk of clogging and allows each pump to pass 50 mm (2") spherical solids. This durable cast iron pump includes a powder coated epoxy finish to prevent corrosion and is designed to provide great heat dissipation from the motor, ensuring a long service life. As with every Zoeller® pump, each one is 100% pressure-tested, submerged and run to ensure quality and reliability for years of trouble-free performance!

- Variable level control systems and containers of various sizes are available for longer cycles.
- Hermetically sealed to be watertight, dust-tight, and completely submersible.

Specifications

Motor Characteristics

Motor	2.8 KW
Voltage	380 V
Phase	3 Ph
Hertz	60 Hz
RPM	3450 RPM
Type	3 phase
Insulation	Class B
Amps	4.6 Amps

Pump Characteristics

Operation	Nonautomatic
Discharge Size	2" or 3"
Solids Handling	50 mm (2") spherical solids
Cord Length	6 m (20') standard
Cord Type	H07RN
Max Head	15.2 m (50')
Max Flow Rate	446.7 LPM (118 GPM)
Max Operating Temp	54°C (130°F)
Cooling	Oil filled
Motor Protection	IPX8

Materials Characteristics

Cap	Cast iron
Motor Housing	Cast iron
Pump Housing	Cast iron
Base	Cast iron
Upper Bearing	Ball bearing
Lower Bearing	Ball bearing
Mechanical Seals	Carbon and ceramic
Impeller Type	Non-clogging vortex
Impeller	Cast iron, bronze optional
Hardware	Stainless steel
Motor Shaft	1117 carbon steel
Gasket	Neoprene

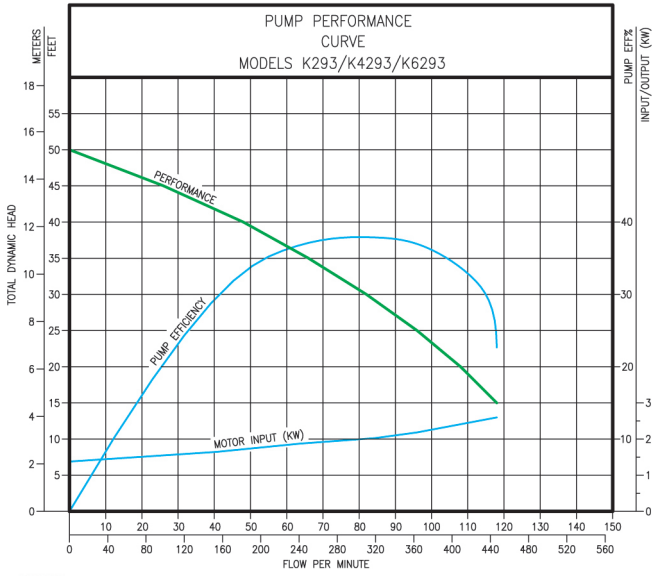
60 Hz



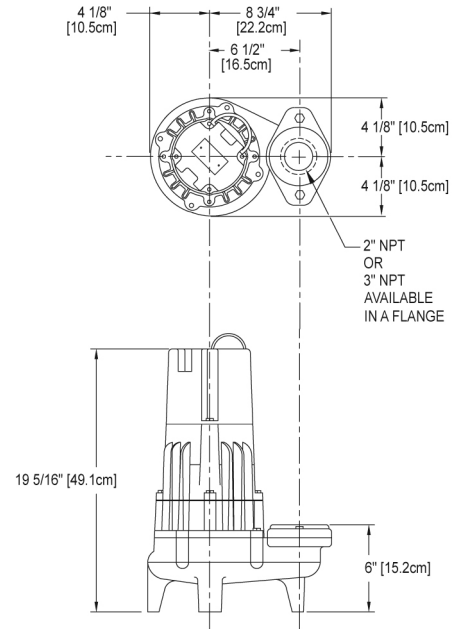
PUMP COMPANY

Zoeller Family of Water Solutions™

Model K293

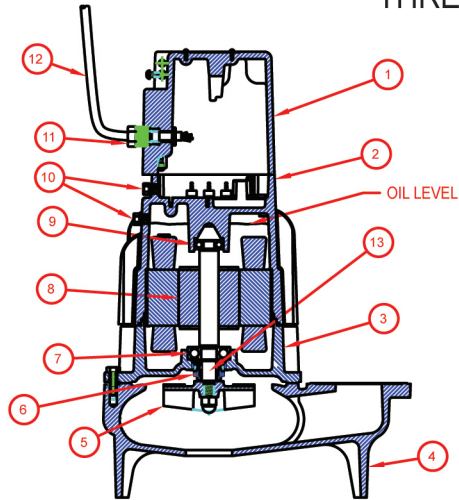


151317



SK1024

THREE PHASE



ITEM	DESCRIPTION	MATERIAL	QTY.
1	COVER HOUSING	ASTM A-48 CAST IRON/CLASS 30	1
2	MOTOR HOUSING	ASTM A-48 CAST IRON/CLASS 30	1
3	ADAPTER HOUSING	ASTM A-48 CAST IRON/CLASS 30	1
4	PUMP HOUSING AND BASE	ASTM A-48 CAST IRON/CLASS 30	1
5	VORTEX IMPELLER	CDA #C89833 BRONZE	1
6	SHAFT SEAL	CARBON/CERAMIC	1
7	LOWER BEARING	HIGH-CARBON STEEL #52100	1
8	MOTOR - ROTOR AND STATOR	SQUIRREL CAGE INDUCTION	1
9	UPPER BEARING	HIGH-CARBON STEEL #52100	1
10	OIL FILL AND TEST PLUGS	1/8-27 N.P.T.	2
11	CORD SEAL	NEOPRENE	1
12	POWER CORD	SOW/SOOW (CE MODEL HO7RN-F)	1
13	SHAFT	AISI 1117	1

SK2966

Model

Model Number	Seal	Mode	Volts	Phase	Amps	KW (p1)	Hz	Lbs	Kg
K293	Single	Non	380	3	4.6	2.8	60	90	41

Note: This product is not available in North America.

Your Peace of Mind is Our Top Priority®
3649 Cane Run Rd | Louisville, KY 40211 USA

+1 502-778-2731 | 1-800-928-7867 | Fax: +1 502-774-3624

www.zoeller.com

Product information presented here reflects conditions at time of publication. Consult factory regarding discrepancies or inconsistencies. Copyright Zoeller Company. All rights reserved.